

**PLAN OF PROPOSED SUBDIVISION**  
**OF PART OF**  
**NE1/4 SEC 27, TWP 16, RGE 26, W2 Mer**  
**IN THE**  
**R.M. OF MOOSE JAW No. 161**  
**SASKATCHEWAN**  
**2016**  
**SCALE = 1: 5000**

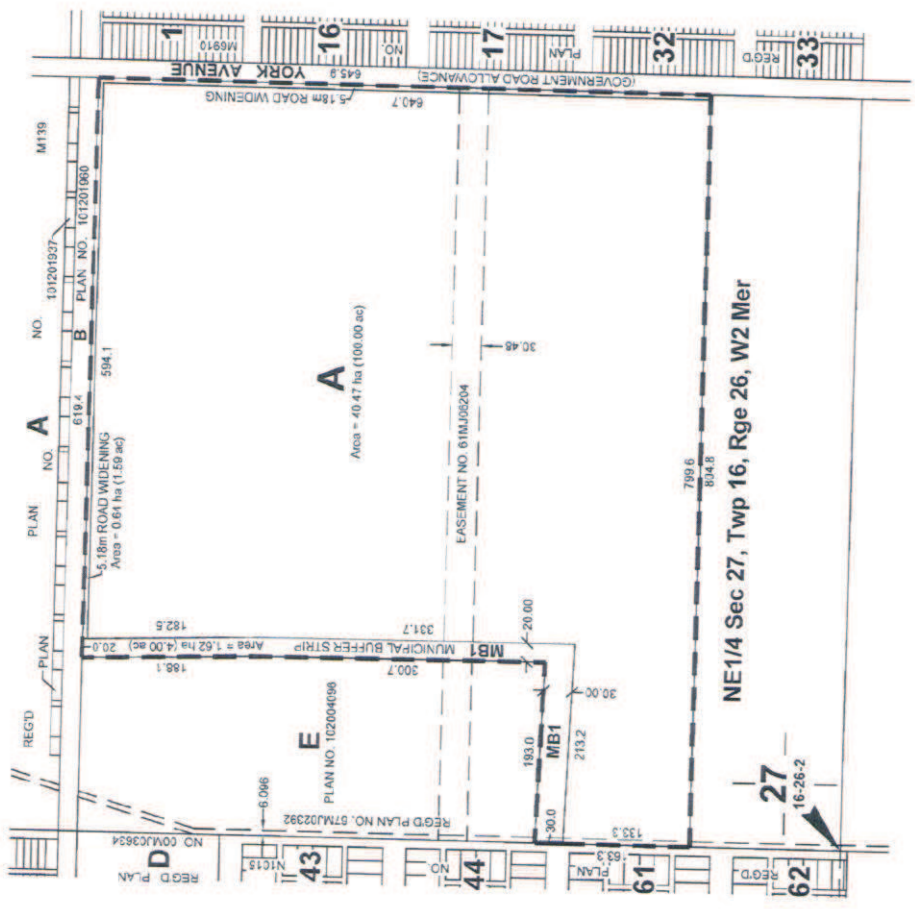
**NOTES:**  
 - MEASUREMENTS ARE IN METRES AND DECIMALS THEREOF.  
 - SOME MEASUREMENTS ARE APPROXIMATE AND MAY DIFFER FROM THE FINAL PLAN OF SURVEY BY AS MUCH AS 1.0 %.  
 - PORTION TO BE APPROVED IS OUTLINED WITH A BOLD DASHED LINE AND CONTAINS 42.73 ha (105.59 ac)

*S. Rajkumar*  
 SURESHKUMAR RAJAKUMAR  
 SASKATCHEWAN LAND SURVEYOR



*FEB - 08 - 2016*  
 DATE

*Maat Noble*  
 CITY OF MOOSE JAW



**NE1/4 Sec 27, Twp 16, Rge 26, W2 Mer**

**27**  
 16-26-2